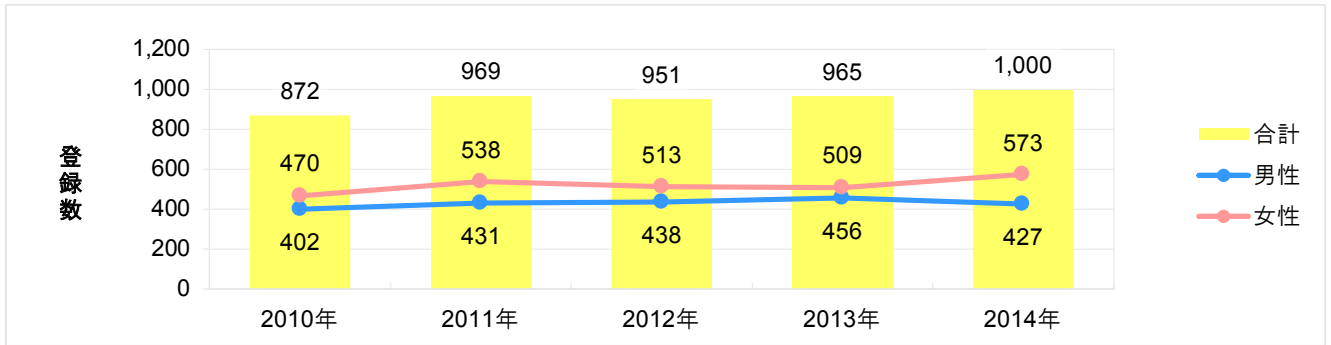


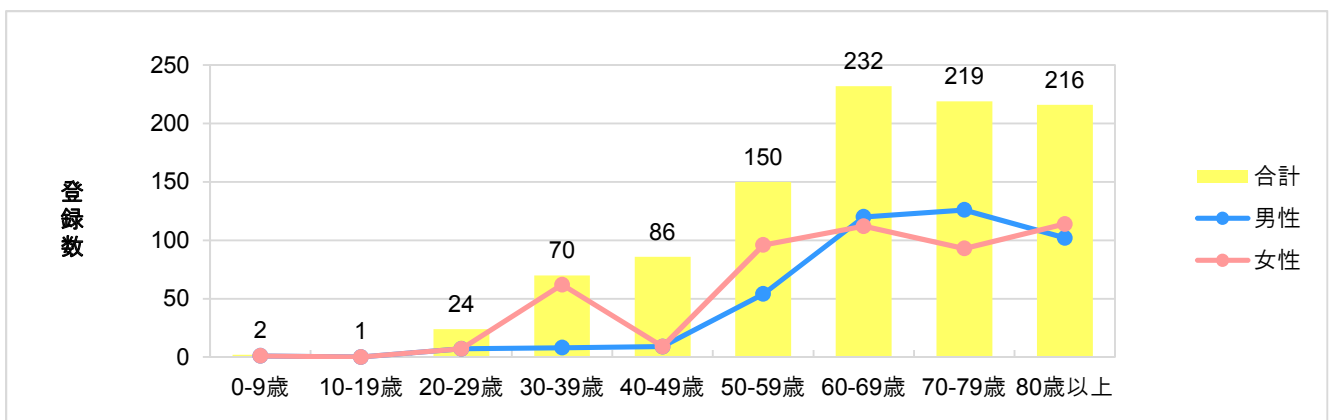
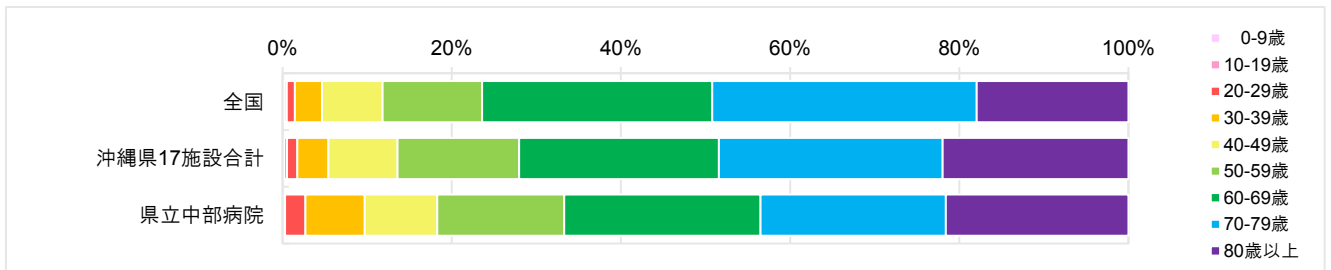
院内がん登録の概要

登録数の推移



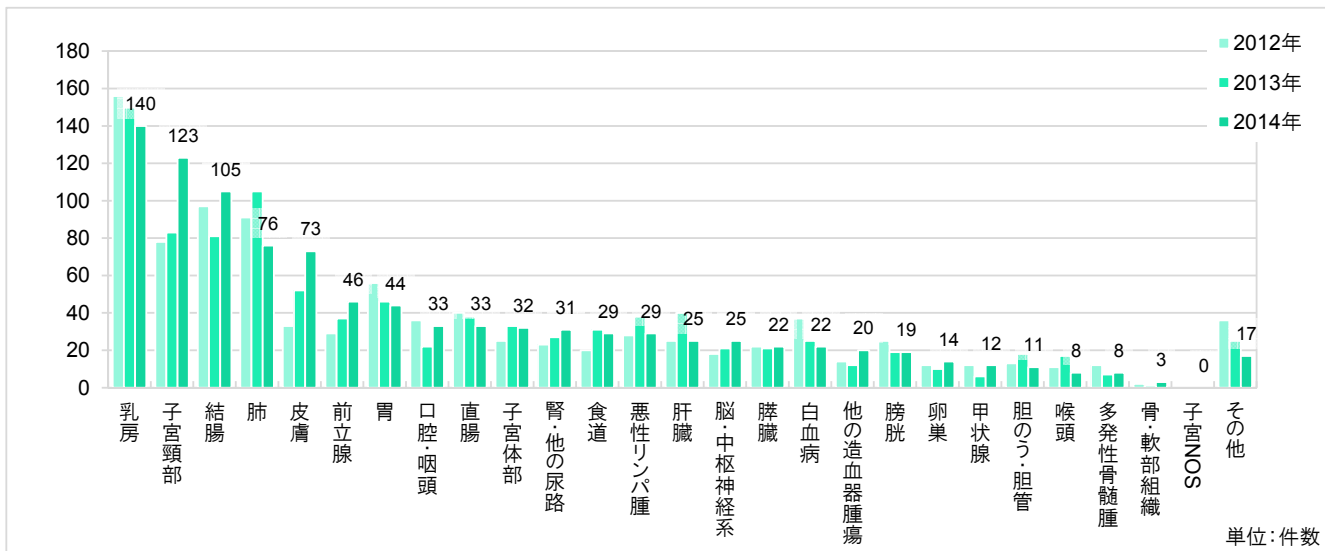
年齢階級別 登録数と登録割合

	全国		沖縄県17施設合計		県立中部病院	
0-9歳	1,443	(0.2%)	18	(0.2%)	2	(0.2%)
10-19歳	1,772	(0.3%)	30	(0.3%)	1	(0.1%)
20-29歳	6,070	(0.9%)	115	(1.2%)	24	(2.4%)
30-39歳	20,807	(3.2%)	346	(3.7%)	70	(7.0%)
40-49歳	46,022	(7.2%)	768	(8.2%)	86	(8.6%)
50-59歳	75,750	(11.8%)	1,347	(14.3%)	150	(15.0%)
60-69歳	175,015	(27.2%)	2,219	(23.6%)	232	(23.2%)
70-79歳	201,087	(31.2%)	2,482	(26.4%)	219	(21.9%)
80歳以上	115,514	(18.0%)	2,063	(22.0%)	216	(21.6%)
合計	643,480	(100.0%)	9,388	(100.0%)	1,000	(100.0%)

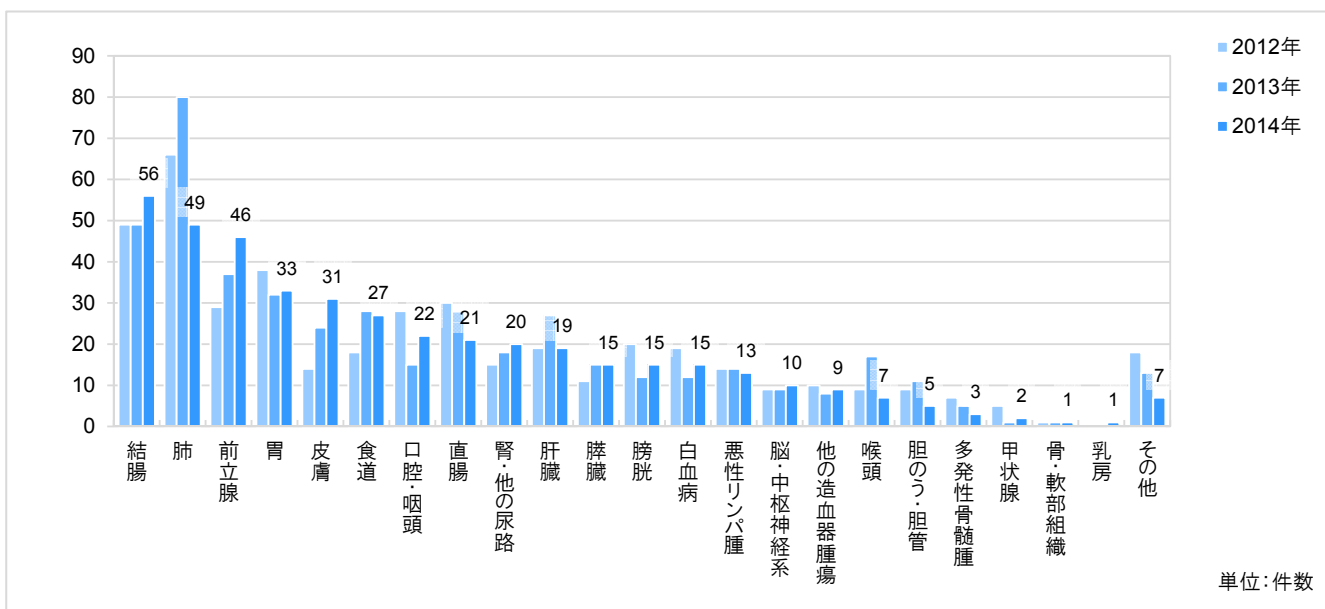


*症例区分「8：その他（セカンドオピニオンなど）」を除いて集計

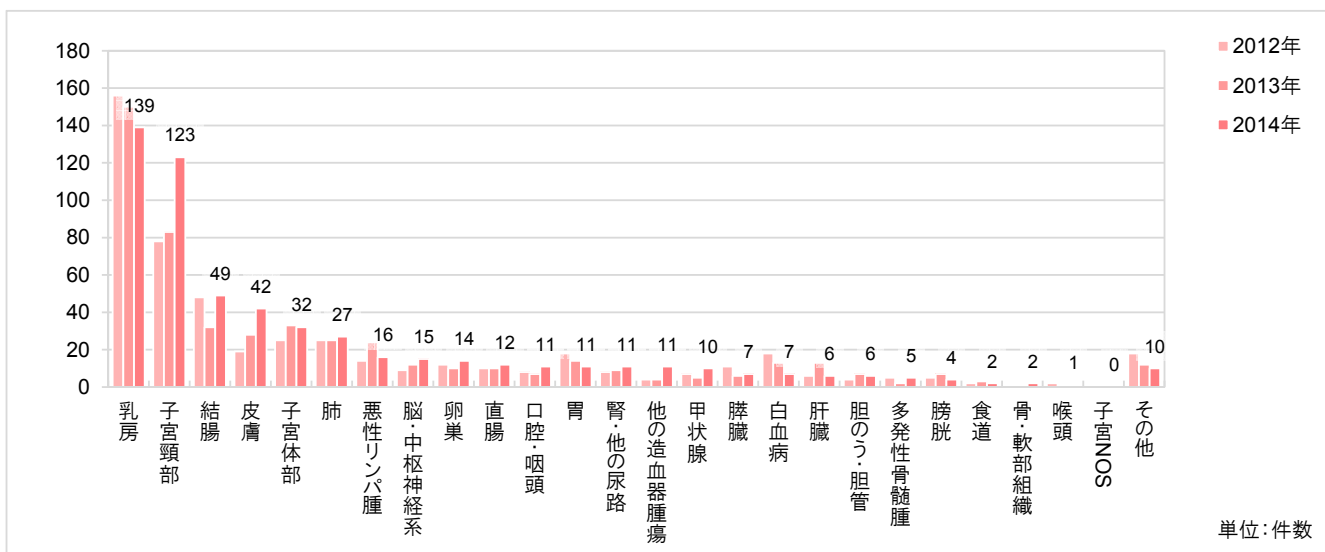
部位別 登録数の推移—男女計



部位別 登録数の推移—男



部位別 登録数の推移—女



*症例区分「8：その他（セカンドオピニオンなど）」を除いて集計